



1867

# HOWARD UNIVERSITY









# Contents

- 4 HISTORY OF HOWARD UNIVERSITY**  
Since 1867, Howard has awarded more than 100,000 degrees in the professions, arts, sciences and humanities.
- 5 LETTER FROM THE CHAIR**  
How we're bonded together as Bison, even if we're separated by 6 feet or 600 miles.
- 6 LETTER FROM THE PRESIDENT**  
While more obstacles may lie ahead of us, our past experience has taught us how to maneuver around them without slowing down.
- 8 YEAR IN REVIEW**
- 14 STUDENT ACCOLADES**  
Students receive recognition for all of their hard work.
- 16 STAFF AND FACULTY ACCOLADES**  
HU faculty are making exceptional contributions to society and the world of academia.
- 18 DISTINGUISHED GUESTS**
- 20 ACADEMIC AND RESEARCH HIGHLIGHTS**
- 21 NEW APPOINTMENTS**
- 24 FINANCIALS**  
Howard by the numbers.
- 30 MAJOR GIFTS**
- 32 BOARD OF TRUSTEES**
- 34 ADMINISTRATION**



# History of Howard University

Since 1867, **Howard has awarded more than 100,000 degrees** in the professions, arts, sciences and humanities. Howard ranks among the highest producers of the nation's Black professionals in medicine, dentistry, pharmacy, engineering, nursing, architecture, religion, law, music, social work and education.

The University has long held a commitment to the study of disadvantaged persons in American society and throughout the world. The goal is the elimination of inequities related to race, color, social, economic and political circumstances. As the only truly comprehensive predominately Black university, Howard is one of the major engineers of change in our society. Through its traditional and cutting-edge academic programs, the University seeks to improve the circumstances of all people in the search for peace and justice on Earth.

Howard has grown from a single-frame building in 1867 and evolved to more than 89 acres, including the six-story, 400- bed Howard University Hospital. Since 1974, it has expanded to include a 22-acre School of Law West Campus, a 22-acre School of Divinity East Campus, another three-fifths of an acre facility in Northwest Washington and a 108-acre tract of land in Beltsville, Maryland.

Howard prepares men and women to advance social justice and the preservation of human liberty. In each of its 14 schools and colleges, Howard University seeks to develop technically competent and morally committed individuals. The University's library system contains more than 1.8 million volumes, including the Channing Pollock Collection. The Moorland-Spingarn Research Center (MSRC) is recognized as one of the world's largest and most comprehensive repositories for the documentation of the history and culture of people of African descent in Africa, the Americas and other areas worldwide.

## The University competes in 21 varsity sports, including:



Basketball



Football



Golf



Indoor and Outdoor Track



Bowling



Lacrosse



Softball



Swimming



Tennis



Volleyball



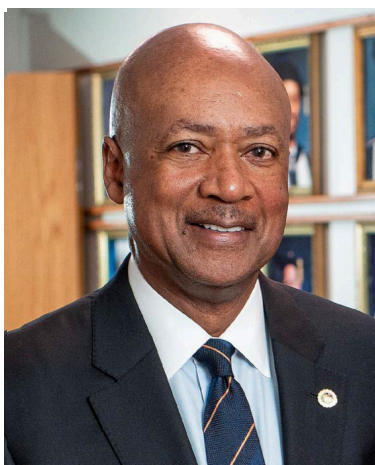
Soccer



Cross Country

Regarded as one of the most prestigious institutions of higher learning, current enrollment approximates 10,000 students from virtually every state, the District of Columbia, and more than 70 countries. The University traditionally has had the largest gathering of Black scholars across the globe.





## Letter From the Chair

### Dear Howard University Community,

Howard University was founded two years after the end of the Civil War. Although active hostilities between military forces of the North and South had ceased, the country remained deeply divided, and the path forward remained unclear. Society was on the brink of massive change – but exactly what that change would look like was impossible, at that moment, to say.

Today, it has been three years since the onset of the coronavirus pandemic, the most devastating and disruptive force to have overtaken our national and global societies in generations. And although having now experienced a full academic year with the majority of our student body residing on campus and largely attending classes in person, it may be tempting to assume we are approaching a return to normalcy, once again, it remains unclear what lasting changes this most recent disruption will ultimately have wrought upon our lives.

In moments of great disorder and uncertainty, Howard Bison have a tendency to look in two directions simultaneously:

**We look to our past for the lessons, guidance, and consolations of history, and to one another, for support.**

From the vantage of the present day, it is clear how the founding of Howard University guides and instructs us to move forward. Against all odds and all obstacles, we must safeguard the education of the Black community. Our founders understood that a university like Howard was the best way to both empower men and women recently freed from bondage, and to propel the country toward greater prosperity.

Despite the pandemic and recent bomb threats, it is essential that we continue to fulfill the promise of Howard's founders by continuing to provide educational opportunities to those who might not get such opportunities elsewhere.

To ensure our security and wellbeing as we persist in the mission of our University, it is vital – indeed essential – that we strengthen the ties of community that bind us together. For what enabled Howard's most auspicious origins were not only the principles and vision upon which it was founded; but the fact that it was created by a group of like-minded individuals who came together to support a most worthy, far-sighted, common cause. It was the fabric of this extraordinary community, the warp and weft of it – a community comprised of people of different races and genders – that endowed Howard with the strength to endure and overcome any challenges she might face.

As we reflect upon this past year and look forward to the years ahead, let us continue to strengthen our internal community so that Howard University may better serve our nation, and our world.

In Truth and Service, respectfully,

**Laurence C. Morse, Ph.D. (BA '73)** | Chairman of the Board of Trustees



## Letter From the President

### Dear Howard University Community,

Our presence as a University and the manner in which we conduct our institution sends a statement to the rest of the world. This year, we demonstrated and communicated our resilience and our fortitude. When there are those who seek to disrupt, disturb, and distract us from our mission, our presence is a statement that we will not be deterred.

When the pandemic began to strike the United States in full force, with particular devastation targeted to the Black community, we never once entertained shutting down our institution, even as we worked to migrate large swaths of our community away from campus and transition operations to a new and unfamiliar virtual environment.

The same ethos has permeated our community in the face of incessant bomb threats this year. Clearly, there are those who want to slow down or put an end to what we do on our campus. It is critical that we do not allow these harassments to deflect us away from the purpose that has brought each of us to Howard University.

The Black community is no stranger to these sorts of threats, both real and fabricated. Since our founding in 1867, Howard has always been a source of fear and a target of violence for those who wish to undermine the pursuit of justice and enshrine the unequal status quo in our society.

*What we do in our classrooms, in our laboratories, in our libraries, in our hospital, is too important to stop. Howard University is too vital to fail or fall short.*

We have never before enabled, and we will not now begin to allow tactics of intimidation to affect how we educate our students at Howard. External pressure must not be permitted to dictate what, why and how we teach our students. On the contrary, threats of this nature only reinforce the vital mission of our hallowed and historic University and the motivation that fuels us to study, to work, to teach, and to learn.

I am immensely and eternally grateful to our students for their flexibility and determination; to our staff members whose critical work behind the scenes facilitates so much of our students' educational experiences; and to our illustrious faculty, our professors and lecturers who shape so much of our students' educations, the truths we reveal as a University; and the service we provide as an institution of higher education. During times of stability and times of tumult, it is the people of Howard University who convey unwaveringly the principles upon which we were founded and the principles upon which we still stand.

Excellence in Truth and Service,

**Wayne. A. I. Frederick, M.D., MBA | Charles R. Drew Professor of Surgery**

President







# The Year in Review

## JULY



### Howard University Raises Over \$3 Million for Golf Program Endowment During Bison at the Beach Inaugural Golf Classic Fundraiser

Howard University hosted the Bison at the Beach Inaugural Golf Classic, a first-of-its-kind golf classic and fundraising event for the Howard University golf program. NBA champion Stephen Curry joined members of the golf team, Howard alumni, the Board of Trustees, corporate sponsors and friends of the University for the two-day event that raised over \$3 million in support of the golf program's endowment.



## AUGUST

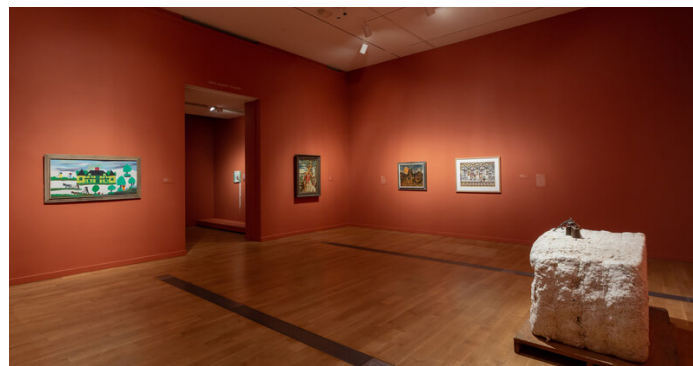
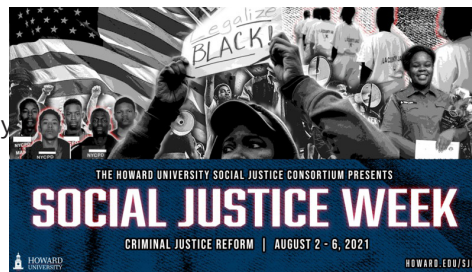


### Howard University Hosts First Annual Social Justice Week Featuring Howard Alumnus, Newark Mayor Ras Baraka

The College of Arts and Science hosted its first annual Social Justice Week from August 2 through 6, via Zoom as one of the initiatives linked to the Mellon Foundation Grant received for the Just Futures Initiative in January.

### Howard Alleviates Debt from Tuition and Fees for Students in Need

The University announced it would clear the debts of juniors and seniors facing financial hardships as a result of the pandemic. Students with an expected family contribution of \$0 and an outstanding balance for the Spring 2021 semester would receive a credit to their accounts that eliminated their debt.



### Four Howard University Gallery of Art Works Featured in Virginia Museum of Fine Arts Exhibition

Howard University Gallery of Art put four works of art on display in the "Dirty South: Contemporary Art, Material Culture and the Sonic Impulse" exhibition at the Virginia Museum of Fine Arts (VMFA).

## SEPTEMBER







# OCTOBER



## Howard University Launches the Center for Women, Gender and Global Leadership on October 20

The Center for Women, Gender and Global Leadership at Howard held a virtual inauguration October 20, which featured a fireside chat with TIAA President and CEO Thasunda Brown Duckett.

## Howard University Targets \$11 Million in COVID-19 Aid to Direct-to-Student Grants

Howard University announced plans to directly distribute \$11 million in funding from the COVID-19 related Higher Education Emergency Relief Fund (HEERF) to students. The financial aid distribution represented another step the University is taking to strengthen need-based financial support to students. A total of 11,949 Howard students received an average of \$834 through the action.

## Howard University Names JPMorgan Chase Its Primary Bank, Expanding Relationship to Drive Economic Empowerment for Students

Howard University and JPMorgan Chase announced an expanded relationship making JPMorgan Chase the University's primary operating bank. This move brought together the two institutions' shared values of excellence, leadership, service and trust to drive impact for Howard students, faculty and staff. The banking relationship is directly aligned with Howard's five-pillar Howard Forward strategic plan and supports the University's goals of improving efficiency and effectiveness and serving the community.

*“Howard definitely showed me that literally nothing is impossible.”*

**- COLIN JOSEPH (B.A. '22), 2022 REGINALD F. LEWIS PRIZE RECIPIENT**

# NOVEMBER



## Howard University and Alto Pharmacy Announce Alto Scholars Program

The Howard University College of Pharmacy and Alto Pharmacy, a patient-centric telehealth pharmacy committed to health and wellbeing, announced a three-year partnership to support student scholarships. Under the program, Alto plans to contribute \$450,000 to support scholarships for five pharmacy students in each of the next three years. This builds on an existing partnership that established paid internships and forged a career path to quality permanent roles for aspiring pharmacy students.



# DECEMBER



## Howard University Men's Basketball Participates in Michael B. Jordan-Backed Invesco QQQ Legacy Classic on December 18

Howard University Men's Basketball battled North Carolina A&T University in the Invesco QQQ Legacy Classic, held at the Prudential Center in Newark, New Jersey on Saturday, December 18. The inaugural classic was hosted by Michael B. Jordan, Turner Sports, Harris Blitzer Sports & Entertainment, and Scout Sports and Entertainment.

## The Ronald W. Walters Leadership and Public Policy Center Publishes Final Report of 'Engaging College Students in 21st Century Law Enforcement'

Ronald W. Walters Leadership and Public Policy Center published its final report studying police-community relations using college students to help drive the discussion on diversity and inclusion and how best to transform recruitment strategies for law enforcement agencies in the 21st century. This project was supported by a cooperative agreement awarded to Howard University by the U.S. Department of Justice, Office of Community Oriented Policing Services.

# JANUARY



## Howard University Joins NBCU Academy In a New Academic Partnership

Howard University Cathy Hughes School of Communications and College of Engineering and Architecture joined a multiyear partnership with NBCU Academy, NBCU News Group's multiplatform journalism training and development program.

## New Exhibition at Howard University: New Acquisitions And African American Masters

In honor of the reopening of the Howard University Gallery of Art, after a two-year closure due to COVID-19, the galleries of the Chadwick A. Boseman College of Fine Arts featured a selection of African American masterworks, including recent acquisitions from the Ronald W. and Patricia Walters, Lois Mailou Jones, and James A. Porter collections.



# FEBRUARY



## Howard University Launches New Destination for News and Storytelling

The Office of University Communications (OUC) announced the launch of Howard University's premier destination for news and stories. The Dig: Howard's News and Stories Hub is a new, multimedia website for the latest news and stories popping up across campus.

## Howard University Establishes Toni Morrison Endowed Chair in Arts and Humanities

The Toni Morrison Endowed Chair in Arts and Humanities was established using \$3 million from philanthropist Mackenzie Scott's transformative gift to the University. It honors the distinguished Howard alumna and award-winning novelist Toni Morrison.





# MARCH



## Kiwibots Take Over Howard - With Food Deliveries

A new food delivery service called Kiwibots were deployed around campus beginning March 14. The remote-



controlled fleet allow students, faculty and staff to order meals through HU Dining's Bite mobile app, and have food delivered to more than 20

residential, academic and business offices throughout main campus.

## Howard University School of Law Hosts Library Dedication Ceremony for the late Vernon E. Jordan Jr.



Howard University School of Law recognized the late alumnus, Vernon E. Jordan Jr., by naming the School of Law library in his honor. The Vernon E. Jordan Jr. Law Library dedication took place on March 3 on Howard University West campus. Many gathered to honor Jordan as a long-time civil rights leader, adviser, grandfather and close friend.

# APRIL



## Dr. Wayne A. I. Frederick to Retire as 17th President of Howard University by June 2024

After 34 years as an integral member of the Howard community – as student, faculty member, administrator, and, over the last nine, as president – Dr. Wayne A. I. Frederick (B.S. '92, M.D. '94, MBA '11) informed the Howard University Board of Trustees of his plan to retire from the presidency by June 2024, committing to remain in place to ensure a smooth transition of leadership. Dr. Frederick began as interim president in 2013 and assumed the permanent position in 2014.



## The Inaugural Graduating Class of the Chadwick Boseman College of Fine Arts

The inaugural graduating class of the Chadwick Boseman College of Fine Arts at Howard University celebrated commencement.

## Howard University Hospital Revitalization Takes a Big Step Forward

The University is advancing plans to build a new hospital for Howard University Hospital, partly through the support of a \$100 million federal government budget appropriation this year. The new hospital is also slated to benefit from a \$225 million, 20-year tax abatement on commercial development sites owned by Howard, \$25 million in infrastructure investment and \$26.6 million in programmatic support over six years from the District of Columbia.



# MAY



## Howard University Launches the Intercultural Affairs and LGBTQ+ Resource Center

Howard University announced the opening of the Intercultural Affairs and LGBTQ+ Resource Center with Jose Cadiz (he/him) as assistant director and JaQuwan Ward (he/him) as program coordinator.

JUNE



### Howard University Center for Sickle Cell Disease Marks 50th Anniversary

The Howard University Center for Sickle Cell Disease celebrated its 50th anniversary with a symposium focused on the history of the landmark institution on June 17, 2022. The event coincided with World Sickle Cell Awareness Day, which was commemorated on June 19.

### Howard University Announces \$785 Million Investment to Accelerate Renovations and Construct New Academic Centers

In March, Howard University officials announced plans for the largest construction real estate initiative in the institution's history. The University will invest \$785 million to build three new state-of-the-art multidisciplinary academic halls and renovate several existing structures, including the historic Myrtilla Miner Building, that will house the School of Education, and the Howard University Middle School for Mathematics and Science. The new academic centers will house teaching and research in health sciences; arts and communications; and associated science, technology, engineering, and mathematics programs. The new construction projects are slated to begin this year and are expected to be completed by 2026. Emerging from continued improvement in the University's ratings and in conjunction with the priorities established in the Howard Forward strategic plan, this is by far the largest real estate investment in Howard University's history.

The historic investment is part of a phased Central Campus

Master Plan (CCMP). Announced in 2020, the CCMP serves as the University's roadmap for the long-term transformation of Howard's main campus through capital improvements that align with the University's mission and vision. These efforts are made possible in part because of enrollment growth, increased philanthropic and public investment in the University, and the University's efforts to build financial strength as outlined in the five-year strategic plan.

Of the \$785 million real estate investment, \$670 million will be used to fund three new academic centers: the Health Sciences Complex, which will house the College of Medicine, College of Dentistry, College of Pharmacy and the College of Nursing and Allied Health Sciences; the Center for Arts and Communications, which will house the Chadwick A. Boseman College of Fine Arts and the Cathy Hughes School of Communications; and the STEM Center, which will house various STEM programs and disciplines including physics, chemistry, biology, engineering, mathematics and associated labs.

*"I have a foundational confidence in who I am and everything that I can accomplish, and Howard showed me the limitless possibilities that lie ahead."*

- ADISA OMIDO (J.D. '22)











**BRIANA HYMAN**

**Winslow Sargeant Doctoral Award**  
Second-year Ph.D. student, political science



**AISSA DEARING-BENTON**

**2022 Marshall Scholar**  
Senior, history and environmental sciences major



**FIRST YEAR LAW STUDENTS**

**Howard Law Greene Public Service Scholars**  
Ashley Tamia, Dominique Beckles, Crystal Bush, Ashtyn DeWalt, Yvette Lopez



**TAMIA THOMPSON**

**White House Presidential Service Award**  
Sophomore, political science major

# Student Accolades

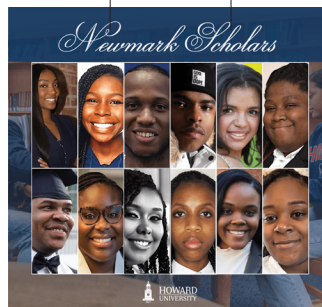
**2022-2023 Rhoden Fellowship**  
Monet Heath  
Senior, journalism major



**2022-2023 John Robert Lewis Scholars & Fellows Program**  
**SCHOOL OF DIVINITY STUDENTS**  
Kelvin Mbi  
Devan Martin

**2022-2023 Digital Archive Student Ambassador**  
Zoé Coker  
Junior, African American studies and philosophy major

**The HUAA Emergency Scholarship**  
Dillan Haynes (BFA '22)



**Cathy Hughes School of Communications Newmark Scholars**

Sydney Assefa	Shanell Hollback
India Bookhart	Brianna Theophile
Katherine Gilyard	Alyssa Mark
Jamarri Kane-White	Kiara Patterson
Machayah Gore	Sarah Jones-Smith
Joshua Heron	Carrington York

**Goldman Sachs Market Madness: HBCU Possibilities Case Study Competition Grand Prize**  
Corine Houngninou, sophomore, computer information systems major  
Jaiden Coleman, sophomore, finance major

JD Jean-Jacques, freshman, history major  
Sierra Williamson, freshman, business management major  
Surakshya Aryal, sophomore, computer science major





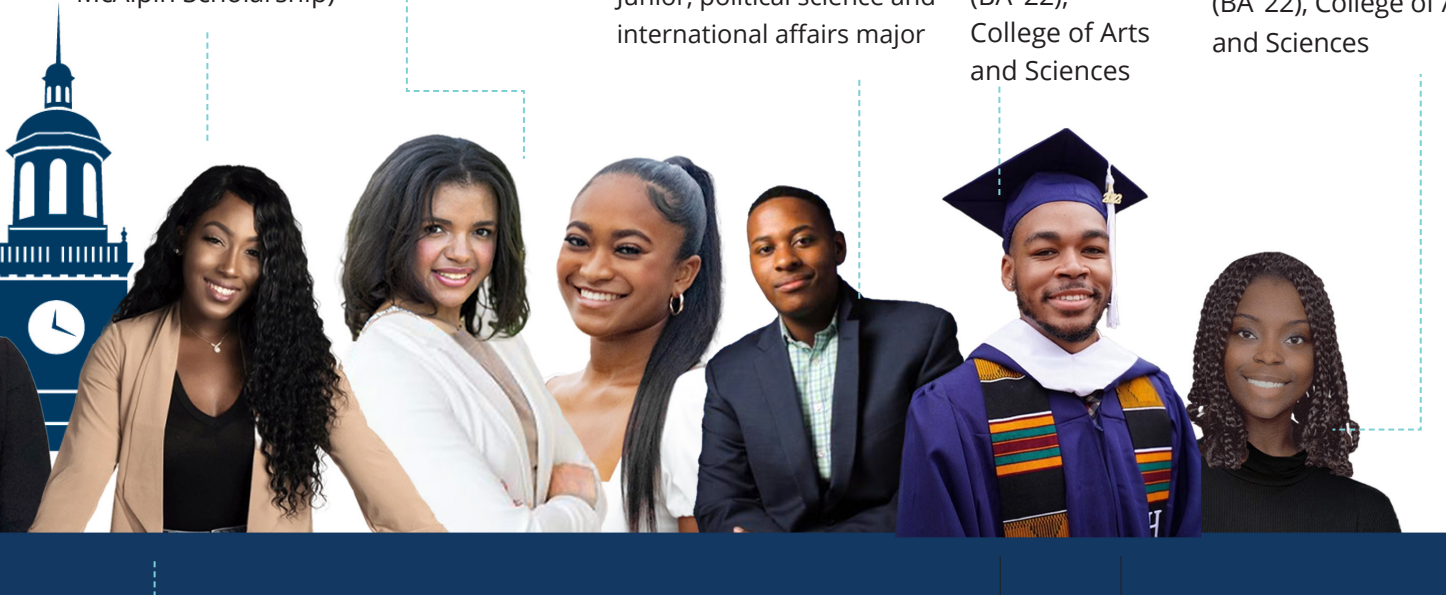
**Corinne Dorsey**  
(Winner of Harry  
McAlpin Scholarship)

**Kendall Lanier**  
**Kiara Patterson**

**2022 David L. Boren  
Scholarship**  
**Tyler Smith**  
Junior, political science and  
international affairs major

**Reginald F.  
Lewis Prize**  
**Colin Joseph**  
(BA '22),  
College of Arts  
and Sciences

**Ronald Walters  
Scholarship**  
**Kenya Henley**  
(BA '22), College of Arts  
and Sciences



**The New York  
Times 2022  
Pulitzer Prize**

**Donovan Thomas**  
(BA '22), Cathy  
Hughes School of  
Communications



**Tayla Hunter**  
Senior, biology major  
**Katelyn Robertson**  
Senior, biology major

**2022 White House  
Correspondents'  
Association Scholars**  
**JUNIOR, JOURNALISM MAJORS**

**Just-Julian Scholars**

**Jean Claude Abeck**, African studies  
and research

**Ikeoluwa Elizabeth Apata**, chemistry

**Marcy Beutlich**, psychology

**Theodore Boyomo**, civil and  
environmental engineering

**Alissa Charvonja**, psychology

**Terri Davis**, communication, culture,  
and media studies

**Victor Ejigah**, pharmaceutical  
sciences

**Marian Foster**, psychology

**Jasmine Fuller**, economics

**Sama Ghadiri Gargari**, civil and  
environmental engineering

**Majumder Haider**, electrical  
engineering

**Christine Kindler**, psychology

**Vidhyanand Mahase**, biology

**Bharathi Mandala**, pharmaceutical  
sciences

**Dana McCalla**, sociology and  
criminology

**Maneesh Pandeya**, communication,

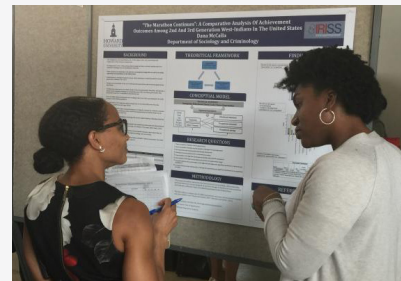
culture and media studies

**Ashley Riley**, counseling psychology

**Catherine Saunders**, English

**Tiffany Wheatland**, history

**Brandyn White**, biology



# Faculty and Staff Accolades

Dean Toyin Tofade

Ngozi Ndulue

Debra H. Ford

Cain Curtis

Nea Maloo



**Phylicia Rashad**, dean of the Chadwick A. Boseman College of Fine Arts, won the Tony Award for best featured actress in a play for her performance in “Skeleton Crew,” which was also nominated for best new play.



**The Howard University Association of Black Journalists** members



brought home four awards from the 2021 Salute to Excellence Awards hosted by the National Association of Black Journalists.

**Debra Holly Ford, MD**, Howard University surgeon, was inducted as a member of the American College of Surgeons (ACS) Academy of Master Surgeon Educators, a coveted honor in the field.



**Clive O. Callender, MD**, legendary Howard University transplant surgeon, was honored by the 2021 American Society of Transplant Surgeons (ASTS) with its Pioneer Award, the most distinguished award bestowed by the organization upon an individual.

**Stanley Andrisse**, endocrinologist scientist and a second-year assistant professor at the Howard University College of Medicine, was named co-recipient of a major National Science Foundation grant to increase access to STEM education for currently and formerly incarcerated people – a big step forward in the emergent movement to create “Prison to College pipeline” programs.

**Dahlia Nduom**, Howard University assistant professor of architecture, had her research work on the intersection of history, culture and traditional building practices in contemporary Ghanaian architecture selected for display at the ArchiAfrika Pavilion in the New Blood 2021 exhibition.



Howard Magazine, led by editor-in-chief **Rin-rin Yu**, won three 2021 Folio: Eddie and Ozzie Awards and an honorable mention. The magazine won best cover, best magazine redesign, best single article, and best profile.





Ava J Sullivan

Mohsen Mosleh

Dahlia Nduom

Justin Hansford

Ivory A. Toldson



**Ava J. Sullivan**, COVID-19 response coordinator and clinical practice supervisor for Howard University Hospital, was the recipient of the 2022 LaRue V. Barkwell Capstone Distinguished Service Award.

**Justin Hansford**, Howard Law professor and director of the Thurgood Marshall Civil Rights Center, has been elected by the United Nations General Assembly to the U.N. Permanent Forum on People of African Descent for the 2022-2024 term.



WHUT-TV and Howard University were honored with the **2022 Excellence in Innovation Award**. America's Public Television Stations (APTS) presented the award during the APTS Public Media Summit.

**Ngozi Ndulue**, Howard University School of Law adjunct instructor, was awarded the 2022-2023 Faculty Innovations in Pedagogy and Teaching Fellowship by The HistoryMakers – the nation's largest African American video oral history archive.

**Ivory A. Toldson, Ph.D.**, author and professor of counseling psychology at Howard University, was recognized among the nation's top scholars in education in the 2022 Edu-Scholar Public Influence Rankings.

**Nea Maloo, AIA**, Howard architecture lecturer, was winner of the 2022 Association of Collegiate Schools of Architecture Course Development Prize issued in collaboration with Columbia University's Temple Hoyne Buell Center for the Study of American Architecture.

**MOHSEN MOSLEH, PH.D.**, Howard University mechanical engineering professor, recently received the Presidential Award for Excellence in Science, Mathematics and Engineering Mentoring.

**Jami Ramberan**, Howard University tenured media professor, was awarded an Emmy from the National Academy of Television Arts and Sciences for public service announcement (single spot) for directing the video "VOTE."



**Curtis C. Cain**, Howard business professor, garnered a National Science Foundation CAREER award for his research success.

# Distinguished Guests



Microsoft president and vice chair **Brad Smith** participated in a two-part fireside chat on October 7 where Smith shared views from his New York Times bestselling book, "Tools and Weapons."

Medical and health sciences students from Howard University joined U.S. Surgeon General **Vivek H. Murthy, M.D.**, and Dr. Frederick on October 7 to talk about how they persevered during the COVID-19 pandemic and developed ways to safeguard their personal well-being.

Ben & Jerry's Homemade CEO, **Matthew McCarthy**, joined Dr. Frederick for a fireside chat discussing equity, advocacy, and innovation on January 26.

NBA deputy commissioner and chief operating officer **Mark Tatum** joined Dr. Frederick on February 9 for a special courtside chat discussing social justice, student opportunities and Howard's participation in the first NBA HBCU classic.

Congressman **Gregory W. Meeks** was welcomed as the orator for the March 4 Charter Day.

**Morris Chestnut**, American actor and NAACP Image Award

winner, served as the master of ceremonies of the 2022 Charter Day Celebration: A Virtual Experience on March 5.

**Cathy Hughes** returned to Howard University to discuss defying the odds at 'Trauma to Triumph: The Rise of the Entrepreneur,' screening on March 25.

U.S. Vice President **Kamala D. Harris** returned to her Alma Mater to promote a Greater Washington Partnership event touting \$4.7 billion in new regional economic investments on January 24.

**Taraji P. Henson**, award-winning actress and Howard University College of Fine Arts alumna, returned on May 7 as the commencement speaker. Henson was conferred an honorary Doctorate of Humane Letters.







# Academic and Research Highlights



## Howard University Joins NIH Initiative to Promote Diversity in AI and Machine Learning Fields

Howard University will lead the \$15 million data science training core of the National Institutes of Health-backed consortium that seeks to close diversity gaps in the artificial intelligence and machine learning fields. Howard computer scientist Legand Burge III, Ph.D., will participate as principal investigator of the data science training aspects of the initiative.

## Bristol Myers Squibb and Five Leading HBCUs Launch Tomorrow's Innovators to Create Custom Biopharma Educational Programming and Increase Recruitment of Black Talent in the Biopharma Industry



Bristol Myers Squibb announced its collaboration with Howard University and four other HBCUs to launch Tomorrow's Innovators—a multimillion dollar strategic alliance to attract top HBCU-affiliated talent to the bio-pharma industry in the next five years. Designed to reach diverse talent sooner in their undergraduate career, Tomorrow's Innovators will provide the support and education needed to reach their career goals within the biopharma industry.

## Howard University Department of Economics Receives \$1.4M from Alfred P. Sloan Foundation for Recruitment and Research Support

A \$1.4 million Alfred P. Sloan Foundation grant will aid the Howard University Department of Economics in constructing a program that will strengthen student recruitment and research opportunities, faculty development and training, and the department's infrastructure.



## The Quantum Biology Laboratory Is Moving Forward by Reaching Back

The Howard University Quantum Biology Laboratory (QBL), in collaboration with William Rowen Elementary School in Philadelphia, Pennsylvania, has established a STEAM (science, technology, engineering, arts and mathematics) lab focused on training the next generation of students in quantum information science. Uniquely, this partnership will be focused on quantum information science.





### Plans For The New Center For Journalism & Democracy

Pulitzer Prize-winning journalist, author, and professor at the Cathy Hughes School of Communications Nikole Hannah-Jones launched the Center for Journalism & Democracy. The center will serve to help students hone their investigative reporting skills and learn to do historically informed journalism in service of democracy and equality.



### HU Research Month Highlights Creativity and Learning

HU Research Week was renamed HU Research Month (April 1-29, 2022) to expand the opportunity to celebrate and honor the outstanding research that is conducted by faculty, students and research staff.



### Howard University College of Dentistry Joins Delta Dental Community Care Foundation, Mary's Center to Address Senior Oral Health Care Crisis

The Howard University College of Dentistry partnered with Mary's Center and the Delta Dental Community Care Foundation to address the oral health care crisis among older adults in the United States. The foundation's program is intended to promote the connection between oral health and overall health, provide quality outcomes, improve access and create greater equity in the care and treatment older adults receive.

### Howard University Joins Princeton-HBCU Alliance Designed to Boost Research Partnerships

Howard University partnered with Princeton University, United Negro College Fund and four other HBCUs to launch a groundbreaking program designed to enable research collaboration between peer faculty at the institutions.

### Howard University Signs Partnership with U.S. Space Force

The U.S. Space Force welcomed Howard into the University Partnership Program on April 11. Establishing strategic partnerships with a select set of nationally renowned universities enables the Space Force to recruit and educate a diverse and tech-savvy guardian workforce, create opportunities for advanced academic degrees, open channels for university students and ROTC cadet scholarships, and establish world-class research opportunities.



### New Research From Karat and Howard University Sheds Light on Access Challenges Facing Black Software Engineers

Researchers from Howard University and Karat, the world's leader in technical interviewing, released new research exploring key factors that can help more Black software engineers enter the tech industry and excel in their careers.

## New Appointments

### **Professor for the Cathy Hughes School of Communications and Knight Chair in Race and Journalism**

Nikole Hannah-Jones

### **Professor for the Cathy Hughes School of Communications and Sterling Brown Chair in English**

Ta-Nehisi Coates

### **Associate Provost for Undergraduate Studies**

Kenneth Anderson, Ph.D.

### **Technical Editorial Advisor for The Hilltop**

Keith L. Alexander

### **General Manager of WHUT-TV**

Sean Plater

### **Chair of the Department of Surgery**

Andrea A. Hayes M.D.

### **Assistant Vice President of External Affairs**

Joe Leonard, Ph.D.

### **Deputy Chief Compliance Officer**

Erica Alexander, OTD/L, CHPC, CFE, CPHQ

### **Senior Vice President of Health Affairs**

Hugh E. Mighty, M.D., MBA, FACOG

### **Associate Vice President for Student Affairs**

Debra Bright, Ed.D.

### **Director of the Moorland-Spingarn Research Center**

Benjamin Talton, Ph.D.

### **Chief Medical Officer of Howard University Hospital**

Robert Linton, II, M.D., MBA, FACHE, FACEP

### **Assistant Vice President in the Office of Auxiliary Enterprises**

LaNiece R. Tyree

### **Vice President and Chief Human Resources Officer**

Warren Petty

### **Professor and Chair of the Department of Anatomy**

Byron D. Ford, Ph.D.

### **Chief Financial Officer**

Stephen Graham

### **Assistant Vice President of Corporate Relations and Chief of Staff**

Allison Morgan Bryant, Ph.D.

### **Executive Director for Howard University School of Business Marriott-Sorenson Center for Hospitality Leadership**

Ashli Johnson







# Financials

## Financial Overview for Fiscal Year 2022

The University ended fiscal year 2022 with operating results of \$159 million compared to \$204 million in fiscal year 2021. The positive results evidence continued philanthropic generosity and steadfast fiscal management. Fiscal year 2022 revenues and expenses reflect a return to campus and more normal operations, specifically with respect to auxiliary services.

In fiscal year 2022, consolidated operating revenues increased 8% or \$87 million to \$1.15 billion. The revenue increases are primarily attributed to more student enrollment, a rebound in auxiliary services as students, faculty and staff returned to campus, and strategic monetization of real property in line with the University’s Central Campus Master Plan.

Operating expenses rose 15% or \$133 million to \$990 million. The University faced the common challenge of rising inflation and economic uncertainty faced by many higher education institutions. Although expenses accelerated more than revenues during FY 2022, the University’s leadership was successful in maintaining a net operating surplus through careful management and decision-making. This resulted in the second largest operating results in recent history, demonstrating the effectiveness of efforts in balancing the budget and ensuring financial stability for the University. Despite the economic uncertainty, the University demonstrated its commitment to retaining talented faculty and staff and ensuring their financial wellbeing by increasing compensation. The average faculty pay increased 20% - and because of this action, more than 600 faculty members saw their annual base salaries increase. The University’s long-term goal is to offer salaries that are in line with faculty compensation at peer institutions.

Howard’s balance sheet is well positioned to support the University’s long and short-term financial needs. As of June 30, 2022, financial assets & liquidity resources that were available within one year for general expenditures totaled \$467MM, including \$75MM line of credit.

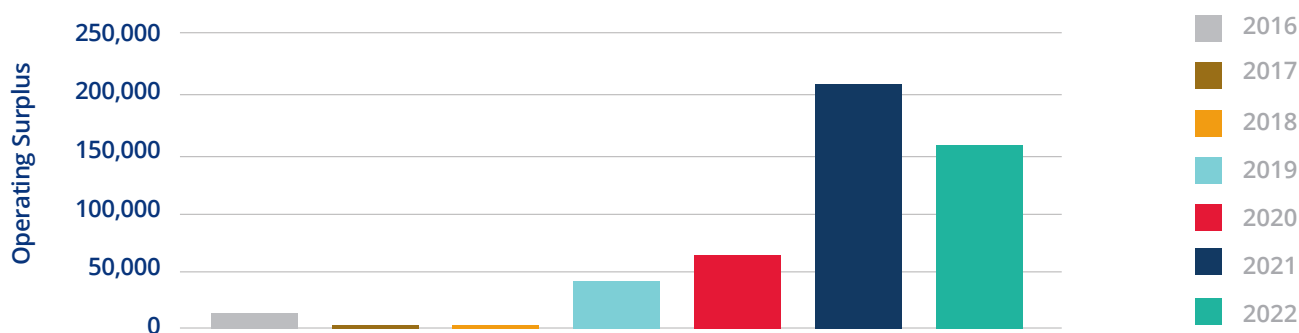
## Consecutive Years with Positive Operating Performance

FY 2022’s positive operating performance of \$159 million marks the favorable achievement of seven consecutive fiscal years of positive operating results. The emphasis on financial sustainability across the organization under Howard Forward, Howard University Hospital’s strengthening financial performance, and the University’s successful real estate strategy have played positive roles in these results.

Howard’s leadership is committed to further improvements in operating performance by increasing and diversifying revenue streams, increasing sponsored research, increasing philanthropy, and reducing costs through enhanced efficiency. All these efforts are to ensure continued financial strength to support the University’s critical mission.

## FINANCIAL RESULTS FOR THE FISCAL YEAR ENDED JUNE 30, 2022

### Operating revenues over operating expenses “Operating Surplus”





## FINANCIAL RESULTS FOR THE FISCAL YEAR ENDED JUNE 30, 2022

### Operating Results: Revenue and Expenses

In fiscal year 2022, total operating revenue increased 8% or \$87 million to \$1.15 billion. The components of revenue are academic services, including sponsored research from grants and contracts, clinical services, and public support – to include the federal appropriation and philanthropic contributions.

Academic services revenue increased 26% or \$68.1 million to \$326.8 million, due to increase in revenue from tuition and fees, net, grants and contracts, and a rebound of 415% in auxiliary services to \$40.9 million, following prior years decline with fewer students on campus during COVID-19. Tuition and fees revenue of \$193.4 million, presented net of financial aid, increased 18% from fiscal year 2021. The tuition revenue increases this past year reflect more student enrollment at Howard University. Grants and contracts revenue to support research, training and other services increased 7% to \$92.5 million in 2022.

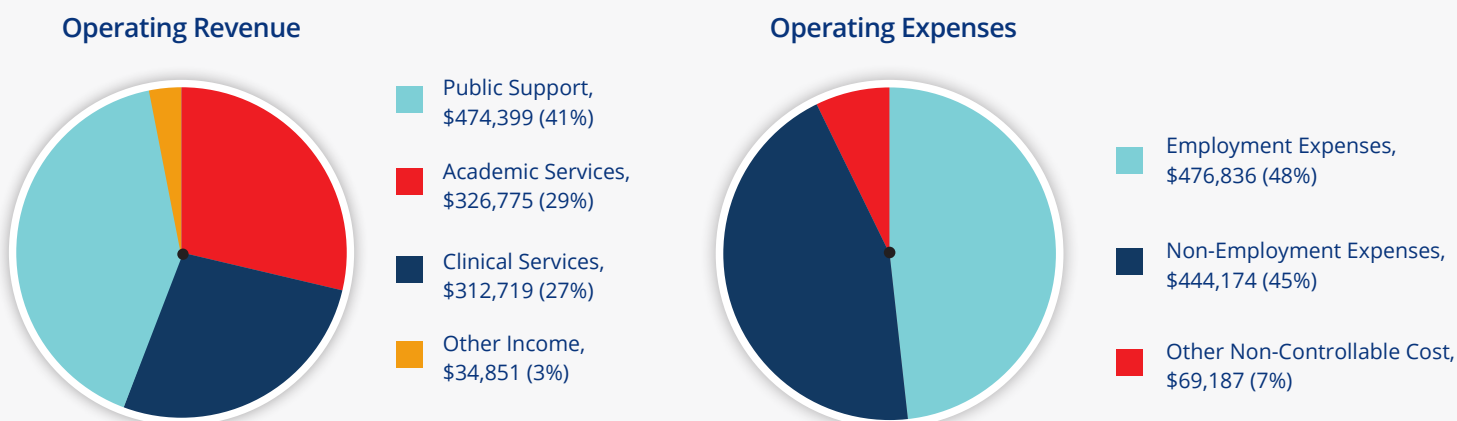
Clinical services revenues increased 3% or \$8.2 million to \$312.7 million, due to increases in hospital patient volume, rates, and collections. These increases were partially offset by declines in patient service revenue from the faculty medical practice and dental clinic.

Public support, including Federal and non-federal sources, represent 44% of the University's total operating revenues. Total public support revenues increased 2% or \$10.8 million to \$509.3 million. The Federal Appropriation, which accounts for 21% of Howard's total operating revenues, remained flat year over year at \$244 million. Other public support is attributable to philanthropy from corporations and foundations, distributions from the endowment and other income, increased 3.8% to \$265 million.

The University's operating expenses increased by \$133 million or 15%, to \$990 million for the fiscal year-ending June 30, 2022. Employment expense (i.e., salaries, wages, and benefits) at \$477 million represent 48% of total operating expenses. Howard implemented pay raises for faculty and staff in FY22, and the University has budgeted for the next phase of faculty and staff compensation increases effective January 1, 2023.

Non-employment expense increased 36% or \$117 million, to \$444.2 million, due higher cost for professional and administrative services, and insurance and risk management. Primarily, the University's focus on management of cybersecurity risks, and greater investment and spend on research activities. Other non-controllable costs, interest expense, depreciation and amortization, increased 37% or \$18.7 million to \$69.2 million.

Operating revenues and expenses are detailed in the graphic below:



## FINANCIAL RESULTS FOR THE FISCAL YEAR ENDED JUNE 30, 2022

### Howard University Hospital

Howard University Hospital experienced positive operating results in FY 2022 of \$12 million, compared to \$27 million in FY 2021. Patient service revenue increased by \$12 million in FY 2022 due to increased Hospital outpatient and emergency care services. Additionally, in fiscal year 2022, the Hospital received other income of \$10 million as part of funding the University received from the Department of Education for COVID-19 relief, \$8 million in funding from a District of Columbia Medicaid Indigent Care grant, and \$2.4 million in Provider Relief Fund (PRF) as part of the Coronavirus Aid Relief, and Economic Securities Act (CARES).

Adventist HealthCare, Inc., assumed responsibilities for the day-to-day operations of the Hospital under a three-year management service agreement in February 2020. The ongoing partnership is expected to continue the development and expansion of clinical services at the Hospital. The partnership includes continuing clinical integration and optimization and is expected to yield improvements in Hospital quality and patient satisfaction scores.

### Improved Measures of Financial Soundness and Stability

As of June 30, 2022, Howard had \$848.3 million in outstanding bonds. In March 2022 and 2021, the University issued the Series 2022A and 2021A Revenue Bonds in the amount of \$300 million and \$151.3 million, respectively. The proceeds from the two bonds will finance certain capital projects and campus renovations (the "Campus Master Plan"). The University invested \$119.6 million and \$77.4 million property construction, renovations, and upgrades in fiscal year 2022 and 2021, respectively.

As of June 30, 2022, the financial assets and liquidity resources available to meet general expenditures total \$467.5 million, including \$75 million line of credit and endowment distribution of \$21.5 million. Howard continues to meet all its required debt obligations and debt service coverage ratios.

### Changes to Net Assets

Net assets increased by \$153 million or 13% to \$1.3 billion as of June 30, 2022, which consist of \$531 million and \$759 million without and with donor-imposed restrictions, respectively. The year over year increase reflects \$78 million and \$75 million increases in net assets without and with donor restrictions, respectively.

### Investments and the Endowment

As of June 30, 2022, Howard had more than \$1.5 billion of investments under management, which includes the endowment pool, operating and pension retirement assets. Howard's investments are managed in diversified portfolios by outside money managers utilizing asset allocation strategies aligned with the University and pension retirement's liquidity requirements, risk tolerance and long-term investment return objectives.

Governance and oversight are provided by the finance/investment committee of the board, while day-to-day operations, asset allocation and portfolio management are administered by the Investment Office in accordance with stated Investment Policies and guidelines.

Howard's investment portfolio results in 2022 were subdued versus 2021 historical gains, yet no less impactful. In a year marked by unprecedented losses in both fixed income and equities, the portfolios significantly outperformed benchmarks and its peers. The drawdowns incurred in major asset classes were driven by an abrupt change in global monetary policy to restrict inflationary pressures once seen as transient. Despite significantly rising global rates, the diversification of the overall portfolio, manager selection and tactical positioning were helpful in preserving capital and avoiding capital losses.



The market value of Howard's endowment remained steadfast despite market struggles and managed to grow in FY 2022, with a total ending market value of \$862.7 million versus \$806.4 million in FY 2021. The endowment performance of -1.9% was in the top 14% of all peer endowment institutions for fiscal year 2022. The endowment value increase of \$56.3 million in FY 2022 consisted of a \$12.6 million loss completely offset by contributions of \$56 million, transfers of \$34 million and \$21.1 million payment to the University to fund operations under the University's revised "spending rule" policy. Approximately 52 percent of Howard's endowment is governed by donor restrictions, while the remaining 48 percent is available for board designation.

The FY 2022 market value of the retirement pension fund declined to \$607.1 million versus \$689.4 million at FY 2021. Benefit payments during FY 2022 totaled \$42.5 million and PBGC premiums of \$2.6 million. Despite tightening by the federal reserve, rising interest rates and unprecedented losses in most major asset classes, the portfolio defended well leading to an improvement in funding ratio of 106% due to drop in present value of liabilities. No lump-sum payments were made to beneficiaries in fiscal year 2022. The trust fund has benefited from a diversified portfolio approach supported by liability-driven fixed investment strategies to match the pension liability profile.

The University's investment office continues to make progress in its administration and management of portfolio assets, augmented by rigorous oversight of investment management costs and fees.

### **Excellence in Financial Management and Administrative Operations**

Under its strategic plan, Howard Forward, the University's financial management team has committed itself to ensuring financial sustainability and continuing to improve the efficiency and effectiveness of financial functions across the institution.

In FY 2022, Howard grew key revenue sources, including net tuition through increase enrollment, contributions, and research grants. Additionally, cost savings opportunities are well underway, such as the reduction of interest expense through debt refinancing and reduction of pension fee expense through a significant funding of the pension plan. Efficient and strategic use of Howard's financial resources enables us to reinvest in our mission, including faculty compensation increases and the continued renewal of our campus facilities for enhanced student and faculty experience and research. The results of our continued focus on financial sustainability are already starting to be reflected in our strong FY 2022 performance and are expected to continue into future periods.

Additionally, in FY 2022, Howard continued to upgrade and modernize its financial and administrative operations. Of note, the University continued its implementation of its new, state-of-the-art, enterprise resource planning (ERP) tool, Workday. Several modules went live in FY21, and several additional modules are expected to go live in the subsequent years. As this new ERP suite of applications begins to become the administrative norm of our institution, we expect enhanced user experiences, including streamlined and automated business processes, upgrades in transparency and enhanced management reporting across Howard.

### **Audited Financial Statements**

Howard's FY 2022 financial statements have received an unmodified opinion from the University's independent auditors. This opinion signifies that the consolidated financial statements of Howard University are fairly presented in all material respects.

**FINANCIAL RESULTS FOR THE FISCAL YEAR ENDED JUNE 30, 2022****Two-Year Operating Performance**

<b>Statements of Activities</b> For Fiscal Years Ended June 30, 2022 and 2021 (in thousands)	<b>FY 2022</b>	<b>FY 2021</b>
<b>Students Enrolled (Fall Headcount)</b>	<b>12,893</b>	<b>10,916</b>
<b>Patients Serviced (Hospital)</b>	<b>45,287</b>	<b>59,321</b>
<b>Operating Revenues:</b>		
Academic Services:		
Tuition and fees, net	\$193,448	\$164,045
Grants and contracts	92,473	86,644
Auxiliary Services	40,854	7,932
Clinical Services:		
Patient Service - Hospital, net	292,408	280,440
Patient Service - Faculty Medical Practice, net	20,097	23,166
Patient Service - Dental Clinic, net	214	920
Public Support:		
Federal Appropriation	240,613	239,613
Contributions	39,550	64,321
Endowment Transfer	13,463	8,625
Operating Investment (loss) Income	(85)	3,455
Real Property	61,759	5,377
Other Income	34,544	48,192
Net Assets released from restrictions	30,666	20,850
<b>Total operating revenue without donor restrictions</b>	<b>1,060,004</b>	<b>953,580</b>
<b>Total operating revenue with donor restrictions</b>	<b>88,740</b>	<b>108,063</b>
<b>Total operating revenues</b>	<b>1,148,744</b>	<b>1,061,643</b>
<b>Operating Expenses:</b>		
Instruction	220,148	201,387
Patient Care	302,344	291,423
Research	63,707	41,404
Academic Services:		
Public service	12,552	13,738
Academic support	59,162	62,757
Student services	30,948	30,062
Institutional support	255,364	190,694
Fundraising	4,076	3,842
Auxiliary enterprises	41,896	21,825
<b>Total operating expenses</b>	<b>990,197</b>	<b>857,402</b>
<b>Operating revenues over (under) operating expenses</b>	<b>158,547</b>	<b>204,241</b>



<b>Non-operating income and expenses without donor restrictions:</b>		
Investment (loss)/income in excess of amount designated for operations	(14,219)	89,468
Endowment Transfer	(13,463)	(8,059)
Loss on extinguishment of debt	-	(14,916)
Net periodic benefit cost other than service cost	7,016	1,021
Change in funded status of defined benefit pension plan	22,678	79,437
Change in obligation for post-retirement benefit plan	5,713	(1,417)
Change in funded status of supplemental retirement plan	78	227
<b>Total non-operating income and expenses without donor restrictions</b>	<b>7,803</b>	<b>145,761</b>
<b>Total non-operating income and expenses with donor restrictions</b>	<b>(13,805)</b>	<b>86,939</b>
<b>Total non-operating income and expenses</b>	<b>(6,002)</b>	<b>232,700</b>
<b>Net Assets:</b>		
Without Donor Restrictions	77,610	241,939
With Donor Restrictions	74,935	195,002
<b>Change in net assets</b>	<b>\$152,545</b>	<b>\$436,941</b>
<b>Total net assets, beginning of year</b>	<b>\$1,137,368</b>	<b>\$700,427</b>
<b>Total net assets, end of year</b>	<b>\$1,289,913</b>	<b>\$1,137,368</b>





## Gifts | \$100,000 and over

AAA-ICDR Foundation  
Abbott Laboratories  
Accor Management US, Inc.  
Akin, Gump, Strauss, Hauer & Feld, LLP  
Alpha Kappa Alpha Educational  
Advancement Foundation, Inc.  
ALT Finance Corporation  
Alto Pharmacy  
Amazon  
Amerigroup DC  
Aura Sub, LLC  
Badia Spices, Inc.  
Bank of New York Mellon  
Baxter Healthcare Corporation  
Beveridge & Diamond P.C.  
Bloomberg Philanthropies  
Boeing Company  
Bristol-Myers Squibb  
Capri Holdings Foundation  
Charles Schwab Foundation  
Chevron  
Chubb Corporation  
Cisco Systems, Inc.  
Citi Foundation  
Delta Dental Community Care Foundation  
Dow Chemical Company  
Dreyfus Cash Investment Strategies  
Edward D Jones & Company, LP  
The Eli & Edythe Broad Foundation  
The Executive Leadership Council  
Facebook Technologies  
Fairview Capital Partners, Inc.  
Ford Foundation  
Ford Motor Company  
FThree Foundation  
General Motors  
Giant Food  
Gilead Sciences, Inc.

Goldman, Sachs & Co.  
Grain Management  
Hopper-Dean Foundation  
Horizon Therapeutics, Inc.  
The Horn Foundation  
Host Hotels & Resorts  
HPS Investment Partners, LLC  
Iger Bay Foundation  
Intel Corporation  
The J. Willard and Alice S. Marriott  
Foundation  
Jacobs Engineering Group, Inc.  
Jerome L. Greene Foundation, Inc.  
John D. and Catherine T. MacArthur  
Foundation  
John S. and James L. Knight Foundation  
Jonathan Logan Family Foundation  
The Kapnick Foundation  
Kappa Alpha Psi Fraternity, Inc., XI Chapter  
KPMG, LLP  
Li You Investment Corporation  
Lockheed Martin Corporation  
The Marie-Josée and Henry R. Kravis  
Foundation  
Marriott Daughters Foundation  
Marriott International Inc.  
McKinsey & Company  
Meta Platforms, Inc.  
Microsoft Corporation  
MNTN Digital, Inc.  
Morgan Stanley  
The Murren Family Foundation

MySun Charitable Foundation  
NBCUniversal News Group  
Netflix, Inc.  
New York Life Foundation  
Novartis US Foundation  
Nuna Baby Essentials, Inc.  
Open Society Foundations  
Peanuts Worldwide, LLC  
PEPCO  
Pivotal Ventures, LLC  
Pohanka Auto Group  
PriceWaterhouseCooper, LLP  
PSEG  
Raytheon Technologies Company  
The Richard E. & Nancy P. Marriott  
Foundation





Milton D. Bernard, D.D.S.\*  
 C. Sylvia & Eddie C. Brown  
 Wanda H. & Ewart F. Brown, M.D.  
 Paul L. Brown, Jr.\*  
 Kathryn & Kenneth I. Chenault  
 Kimberly & William Chisholm  
 Nathaniel Davis  
 Barbara A. Fields\*  
 Mark T. Fleming, M.D.  
 Louis A. Ford\*  
 Juliann S. Bluit Foster, D.D.S.\*  
 Linda D. & Jerald Gooden  
 Veronica W. & Wilbur Haven  
 Derick G. Holt  
 Herman H. Holt, M.D.\*  
 Melody Hobson & George Lucas, Jr.  
 Edward D. Hunter  
 Barbara S. & John E. Jacob  
 Bruce & Martha Karsh  
 Lisa Charles-Lewis & David B. Lewis  
 Maria M. Miller  
 Thomas J. O'Brien, Ph.D.  
 Carrie Walton Penner & Greg Penner  
 Jayashlee Rao  
 Leanne Rees  
 Monette P. Dawson & Martin W. Rodgers  
 John F. W. Rogers  
 Hilary Rosen  
 Richard P. Saller, Ph.D.  
 Ruth Marie Sorenson in honor of Arne M. Sorenson  
 Otto E. Stallworth, Jr., M.D.  
 Charles E. Sutton, Jr., M.D. & Deborah Sutton  
 F. Chapman Taylor  
 Megan M. Taylor  
 Sylvia F. & William D. Taylor  
 Lizzie & Jonathan M. Tisch  
 Dr. Toyin & Dr. Alfred Tofade

\* Denotes an estate gift

Reddit, Inc.  
 Ryder System  
 Sprout Social  
 The Stephen and Ayesha Curry Family Foundation  
 Steve Madden, Ltd.  
 Thurgood Marshall College Fund  
 TIAA-CREF  
 United Concordia Dental Charitable Fund  
 Verizon  
 VMware, Inc.  
 The VMware University Research Fund  
 The Walt Disney Company  
 The Washington Home  
 Wells Fargo  
 West Monroe Partners  
 Wieden + Kennedy  
 The William and Flora Hewlett Foundation  
 Xometry  
 Yum Brands, Inc.  
 Zendesk, Inc.

*“Internal partnership and collaboration across campus, as well as with external groups of alums and supporters, is very important to the success of Howard. I also believe our internal collaborations will lead to our greatest successes, our best stories to tell, and one of our most attractive features.”*

**- PRINCESS GAMBLE, ASSOCIATE VICE PRESIDENT AND COO OF DEVELOPMENT AND ALUMNI RELATIONS**

# Board of Trustees

## BOARD OF TRUSTEES 2021-2022

### **MS. LESLIE D. HALE**

*Vice Chair*

President and Chief Executive Officer  
RLJ Lodging Trust

### **MINNIE BAYLOR-HENRY, ESQ.**

*President*

B-Henry and Associates LLC

### **DONALD B. CHRISTIAN, CPA, CISA**

Partner, PriceWaterhouse Coopers (PwC)  
US East Region Advisory Leader

### **REVEREND DR. MICHELE V. HAGANS**

President and Chief Executive Officer  
Fort Lincoln New Town Corporation

### **THE HONORABLE MARIE C. JOHNS**

Chief Executive Officer  
PPC-Leftwich

### **MS. HILARY ROSEN**

Policy Analyst, CNN  
Partner, SKDKnickerbocker

### **MR. BRUCE E. THOMPSON**

*President*  
Hospitality Development

### **DR. JOHN E. JACOB**

*Chairman Emeritus*

### **STACEY J. MOBLEY, ESQ.**

*Chairman Emeritus*

### **THE HONORABLE M. KASIM REED**

*Trustee Emeritus*

### **DR. LAURENCE C. MORSE**

*Chairman*

Co-Founder and Managing Partner  
Fairview Capital

### **MR. MARK A. L. MASON**

*Vice Chair*

Chief Financial Officer  
Citigroup

### **DR. CHARLES BOYD**

Owner and Medical Director  
The Boyd Cosmetic Surgical Institute

### **MR. GODFREY GILL**

Senior Vice President, Investor Relations  
Vista Equity Partners

### **DR. DANETTE G. HOWARD**

Executive in Residence  
USC Race and Equity Center  
University of Southern California

### **MS. TYRA A. MARIANI**

President, Schultz Family  
Foundation and Head of  
Philanthropy, Emes Project LLC

### **THE HONORABLE RONALD ROSENFELD**

*Former Chair*  
Housing Financial Board

### **DR. REED V. TUCKSON**

Managing Director  
Tuckson Health Connections LLC

## TRUSTEES EMERITI

### **MR. ROBERT L. LUMPKINS**

*Trustee Emeritus*

### **RICHARD D. PARSONS, ESQ.**

*Trustee Emeritus*

### **MR. FRANK SAVAGE**

*Chairman Emeritus*

### **MRS. BENAREE P. WILEY**

*Trustee Emerita*





**PATRON EX OFFICIO**

**THE HONORABLE MIGUEL CARDONA**  
*United States Secretary of Education*

**DR. WAYNE A. I. FREDERICK**  
*President*  
Howard University

**MR. CHRIS CARR**  
Chief Operations Officer  
Sweetgreen

**DR. RICHARD GOODMAN**  
Executive Vice President (Ret.)  
PepsiCo

**THE HONORABLE ALPHONSO JACKSON**  
Senior Advisor to CEO (Ret.), First Data  
Corporation, Fmr. U.S. Secretary of Housing and Urban  
Development

**MR. JAMES J. MURREN**  
Chair  
Nevada COVID-19 Response Relief  
and Recovery Task Force

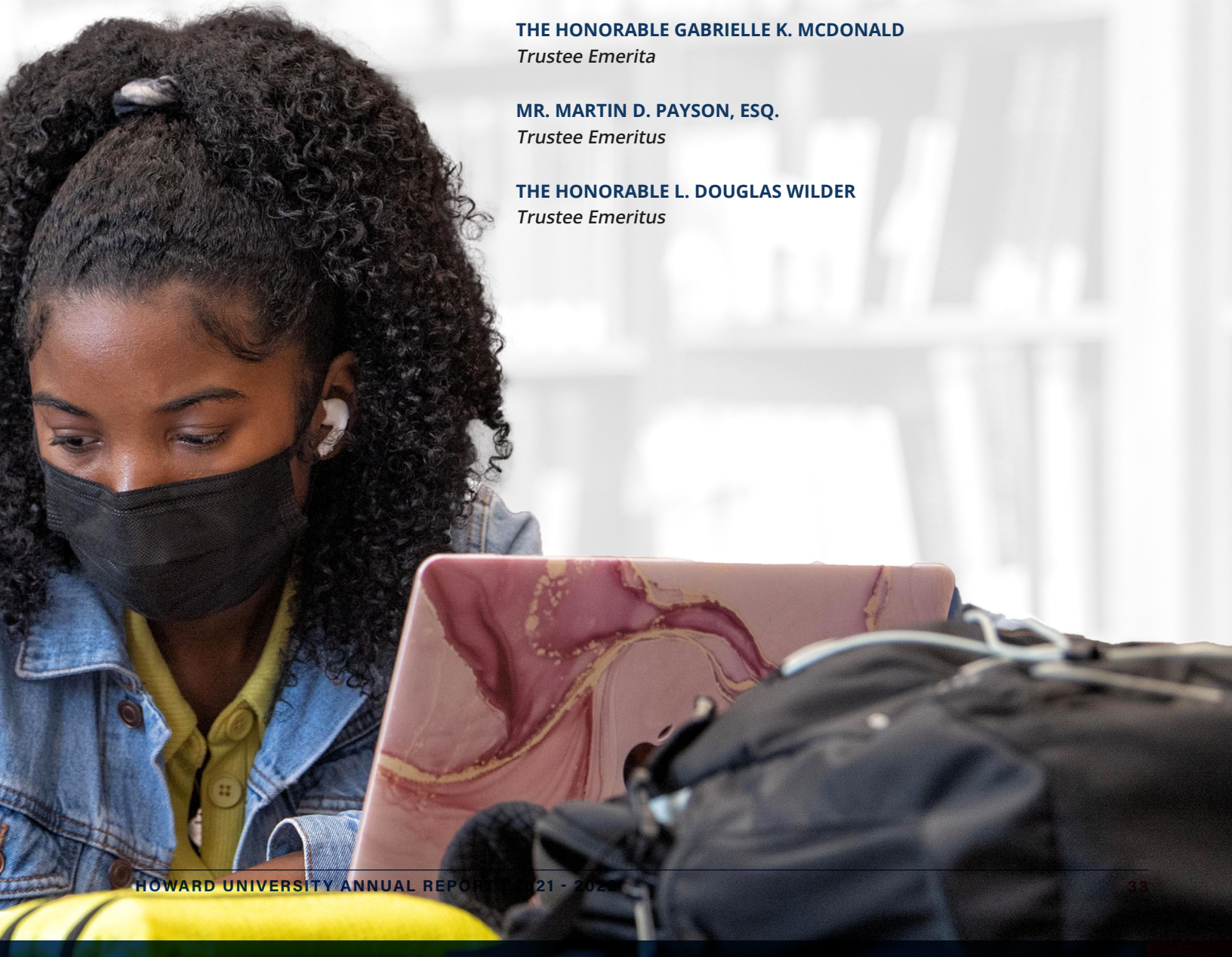
**MR. SHELLEY STEWART, JR.**  
Managing Partner  
BottomLine LLC

**MR. CHRIS WASHINGTON**  
Grassroots Marketing Consultant  
Professional DJ, Assistant Athletics Director and Varsity Coach

**THE HONORABLE GABRIELLE K. MCDONALD**  
*Trustee Emerita*

**MR. MARTIN D. PAYSON, ESQ.**  
*Trustee Emeritus*

**THE HONORABLE L. DOUGLAS WILDER**  
*Trustee Emeritus*





## Administration 2021 - 2022

**President:** Dr. Wayne A. I. Frederick, M.D., MBA

**Provost & Chief Academic Officer:** Anthony Wutoh, Ph.D.,  
R.Ph.

**Executive Vice President & Chief Operating Officer:**  
Tashni Dubroy, Ph.D., MBA

**Senior Vice President of Development:** David P. Bennett

**Vice President and Chief Communications Officer:**  
Frank Tramble

**Vice President, Corporate Relations:** Debbi Jarvis

**Vice President, Student Affairs:** Cynthia Evers, Ed.D.

**Chief Financial Officer:** Stephen Graham

**Senior Vice President, General Counsel & Secretary to the  
Board of Trustees:** Florence Prioleau, Esq.

**Vice President for Research:** Bruce Jones, Ph.D.

**Senior Vice President of Clinical Affairs:** Dr. Hugh Mighty,  
M.D., MBA

**Chief Compliance Officer:** Robert Clark, CIA, CCEP, CBM

**Chief of Staff & Assistant Vice President of External  
Affairs:** Darron "Paul" Monteiro, Esq.

**Secretary, Board of Trustees:** Christie L. Taylor











1867

HOWARD  

---

UNIVERSITY